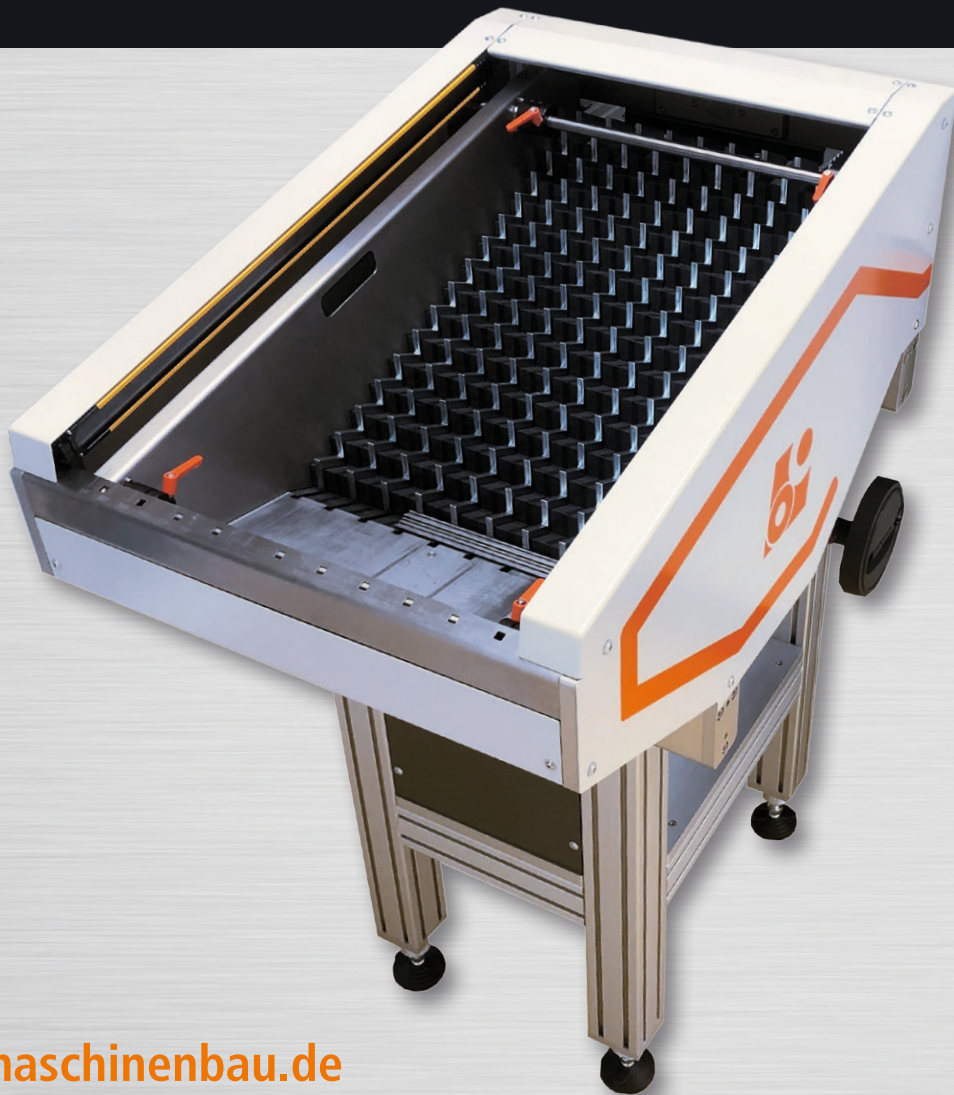


**KNOW-HOW from P&S**  
**for YOUR ADVANTAGE.**

# SL-25

Automated loading/off-loading



## The step loader

With the P&S step loader SL-25 round bars in a diameter range between 2mm – 25mm can be safely separated and automatically fed to the machine. Other sizes or geometries are available on request. The integrated discharge function makes the step loader able to be used as an unloading device as well.

## Huge capacity



Max. filling quantity of bars with a length of 500mm

- Ø 2mm / approx. 12.000 pcs.
- Ø 6mm / approx. 2.000 pcs.
- Ø 10mm / approx. 650 pcs.
- Ø 20mm / approx. 250 pcs.

## Easy operation

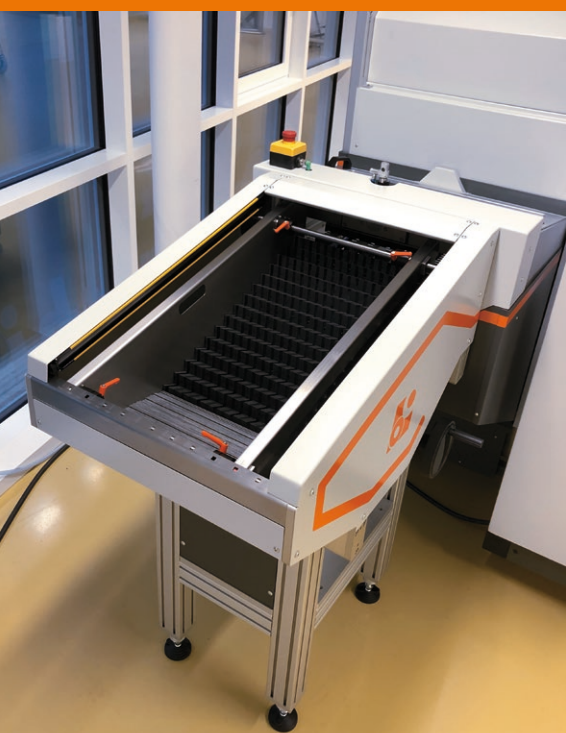


On the input loader the part diameter will be easily adjusted by using the mounted hand wheel.

The set value can be checked on the position indicator.

For the off-loading device no diameter adjustment is necessary.

## Machine connection



The step loader can be connected onto existing P&S systems as well as for a wide variety of different applications.

The connection will be planned and implemented in cooperation with the customer.

**p&s**  
**maschinenbau**  
*persönlich · leistungsstark · zuverlässig*

P&S Maschinenbau GmbH  
Am Taschinger Berg 8 · 93413 Cham

fon: +49 9971 39 27-0  
fax: +49 9971 39 27-27

E-Mail: [info@ps-maschinenbau.de](mailto:info@ps-maschinenbau.de)



[www.ps-maschinenbau.de](http://www.ps-maschinenbau.de)